

# Asia Hub and CIAERA Annual Meeting 2024

November 12-15, 2024 | Centara Riverside Hotel, Chiang Mai, Thailand

**สถาบันวิจัยสังคม**  
**SOCIAL RESEARCH INSTITUTE**  
Chulalongkorn University

## Get to Know CUSRI

Since 1967, the Chulalongkorn University Social Research Institute (CUSRI) has been a leading force in social innovation and research. We address pressing social challenges through collaboration and pioneering research, shaping Thailand's future for sustainable development and equity.

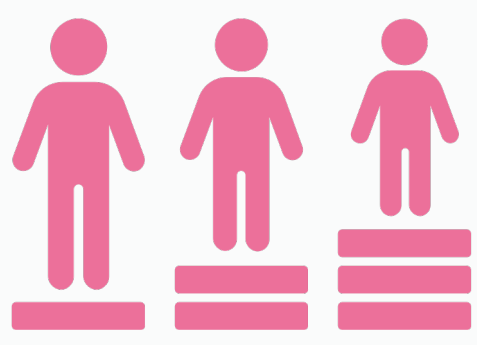
### Our Support & Expertise

CUSRI offers a range of support to organizations, researchers, and individuals looking to collaborate with us on impactful social initiatives.



## 1. Research Collaboration

We invite partners to collaborate on research projects through our specialized research centers and groups:



**Center of Excellence for Human Security and Equity**  
Human security, equity, marginalized populations.



**Center of Excellence for BCG towards Sustainable Development**  
Bio, Circular, and Green economy for sustainable growth.



**Social Innovation and Sustainability for Vulnerable People Research Unit**  
Innovative solutions for vulnerable populations.



**Rights and Social Justice Research Group**  
Livelihood, rights, and security of vulnerable groups.



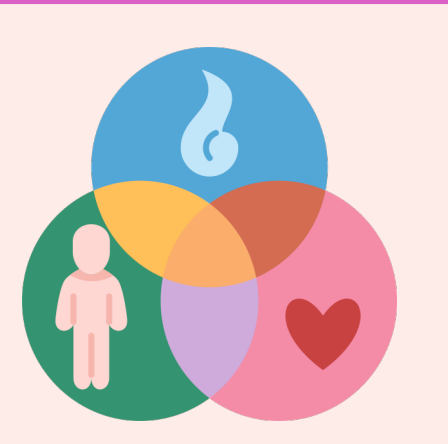
**Community and Environment Research Group**  
Environmental management, community engagement, social impact.



**Cultural Dynamics and Ethnicity Research Group**  
Socio-cultural changes and ethnic diversity.



**Peace Studies and Conflict Research Group**  
Conflict resolution and peacebuilding.



**Healthy Society Research Group**  
Public health and societal well-being.

## 2. Professional Training and Education

We provide opportunities for capacity building and professional development through:



**CUSRI Academy:**  
Offering short courses and professional development programs in social research and policy.



**Master of Arts Program in Human and Social Development (Thai):**  
A graduate program designed for those interested in advancing their expertise in human and social development.

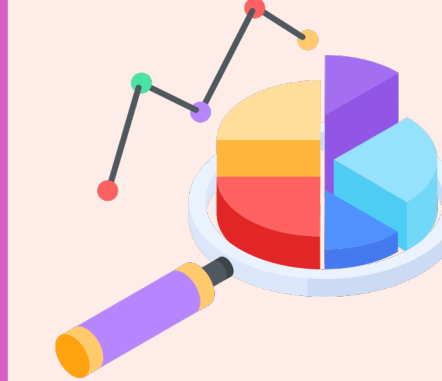


## 3. Innovation and Social Solutions

We also foster innovation for social impact through:



**Social Innovation Center:**  
A hub for creating social solutions that address critical societal needs.

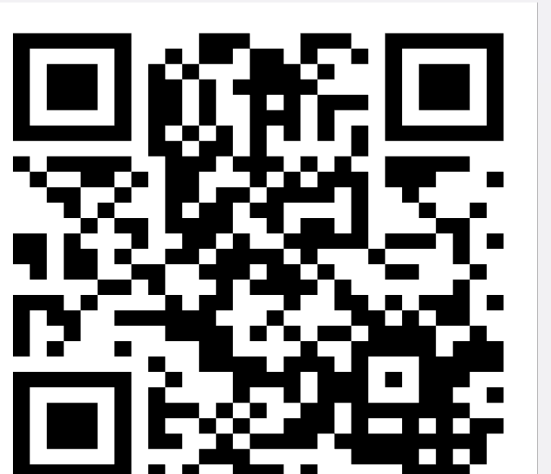


**Social Data Platform:**  
Providing data-driven insights for research and social decision-making.



**Yunus-Chula Social Business Center:**  
Developing sustainable business models to tackle social issues.

Scan to Connect with Our Innovation and Social Solutions Team



## 4. Social Communication and Outreach

Connect with us and share your ideas or research through our communication platforms:

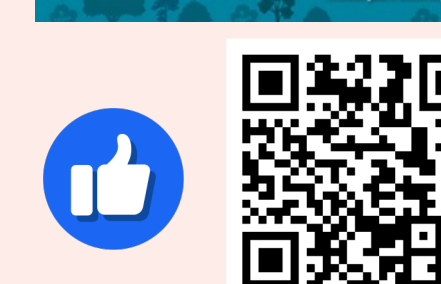


**Chula Radio Plus 101.5 MHz:**

Join discussions on our radio programs or share your insights with a broad audience.



**Journal of Social Research and Review:**  
Submit articles and contribute to academic discussions on social research.



## Collaborate with Us

Join us at CUSRI to drive meaningful impact and shape a better society together.



Social Research Institute, Chulalongkorn University 4th and 5th floors  
Visid Prajubmoh Building Chulalongkorn University Phayathai Road  
Wang Mai Subdistrict, Pathumwan District, Bangkok 10330

02-218-7396  
02-218-7398

Saraban\_CUSRI@chula.ac.th  
cusrimails@gmail.com